



INDOCHINE MINING LIMITED

ACN 141 677 385

2 November 2012

Company Announcements Office
Australian Securities Exchange

6 Pages

Indochine Announces Further High Grade Gold and Silver Results at the Mt Kare Gold/Silver Project, PNG

Additional high grade gold and silver drill hole results have been received from Indochine Mining's (ASX:IDC) Mt Kare gold/silver project in Papua New Guinea (PNG), which include:

Drillhole 147SD12

30 metres (m) at 3.7 grams/tonne (g/t) gold, 96 g/t silver from 7m depth, which includes
7 m at 7.8 g/t gold, 92 g/t silver from 26m to 33m depth downhole, and
30 m at 1.5 g/t gold, 32 g/t silver from 44m downhole, within the Black Zone (BZ).

Drillhole 148SD12

23 m at 3.9 g/t gold, 18 g/t silver from 79m depth downhole, which includes
5 m at 8.7 g/t gold, 10 g/t silver from 96m to 101m depth downhole, and
10 m at 3.0 g/t gold, 13 g/t silver from 130m depth, in the Western Roscoelite Zone (WRZ).

These results complement the consistent medium to high grade gold and silver grades, indicating the very large potential of the project. Drill hole assay results from the last 6 months are tabulated on pages 5 and 6.

"The assay results of drillhole 147SD12 confirm that high grade gold/silver mineralisation extends from surface in the BZ Zone at Mt Kare. High grade zones of this type are the focus of ongoing work being conducted by Indochine, to grow the project resource. Further high grade and 'bonanza' zones are expected to be encountered at Mt Kare, based on a recent exploration review conducted by a consultant with considerable experience at the adjacent world-class Porgera mine", said the CEO Stephen Promnitz.

Results from a further 29 drillholes are pending and are expected to be released over the coming months.

Stephen Promnitz, Chief Executive Officer, **Indochine Mining Limited**

For further details:

Company:	Media:
Indochine Mining - Stephen Promnitz, CEO	FCR - Rob Williams
info@indochinemining.com +61 2 8246 7007	+61 2 8264 1003 / +61 468 999 369

INDOCHINE MINING LIMITED

AUSTRALIA: Suite 1, Level 3, 275 George St, Sydney, NSW 2000, T: +61 2 8246 7007, Fax: +61 2 8246 7005

Table 1: Assays from reported Drill Holes

Hole	From (m)	To (m)	Interval (m)	Au g/t	Ag g/t	Domain
147SD12	7.00	37.00	30.00	3.74	96.31	BZ
	44.00	74.00	30.00	1.53	32.21	
	83.00	91.00	8.00	0.72	2.11	
148SD12	51.00	64.00	13.00	1.02	19.32	WRZ
	69.00	75.00	6.00	1.65	28.48	
	79.00	102.00	23.00	3.86	17.96	
	130.00	140.00	10.00	2.98	12.79	

Intercepts are downhole and not true width. Assays reported as received from the laboratory, no top cuts applied.

Table 2: Location of reported drillholes

Hole	Zone	Mt Kare Local Grid		RL	Azimuth	Dip	Depth
		Easting	Northing				
147SD12	BZ	19592.2	84324.7	3087.5	136	-51	95.4
148SD12	WRZ	18866.6	84266.8	2927.0	315	-65	154.1

Figure1: Mt Kare Resource Plan with locations of drillholes and resource model zones

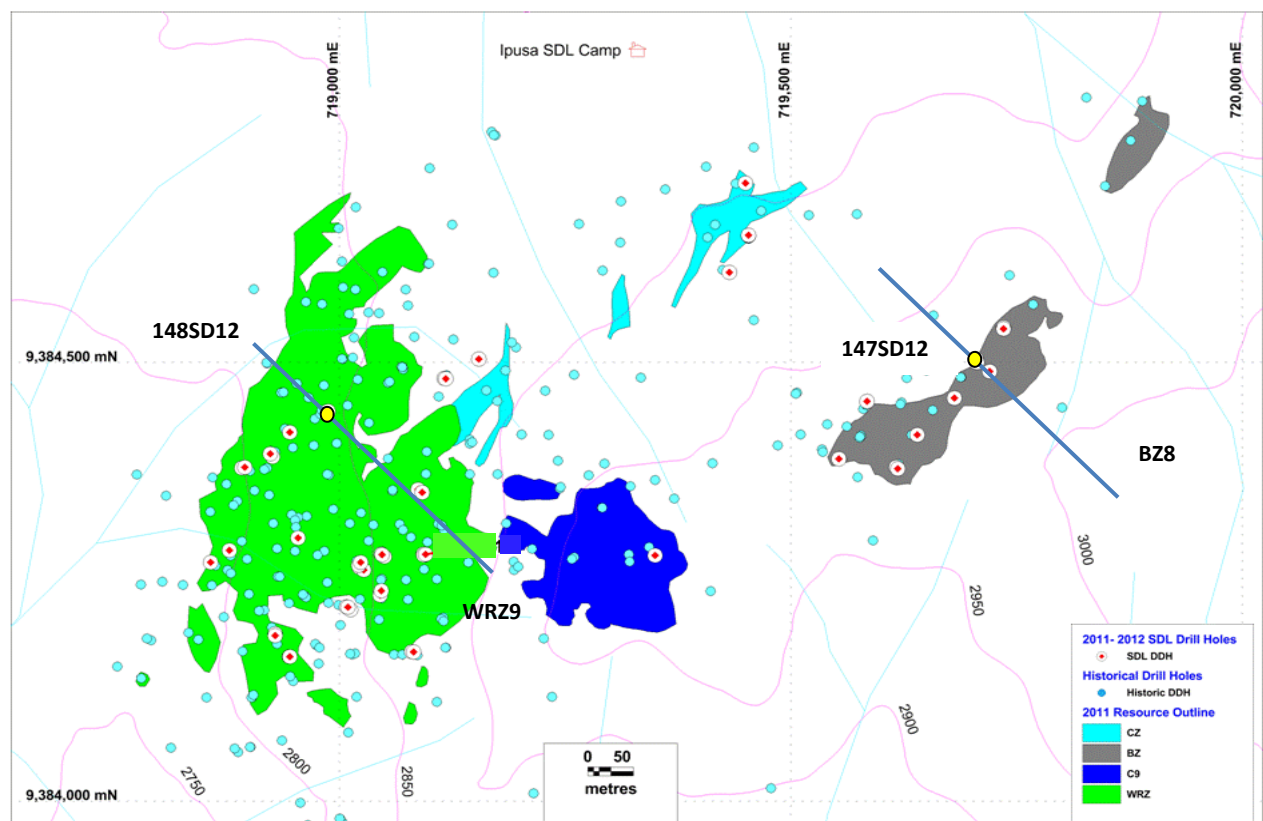


Figure 2: Cross-Section – BZ drilling with past and new drill assay results (red bars) from twin hole 147SD12

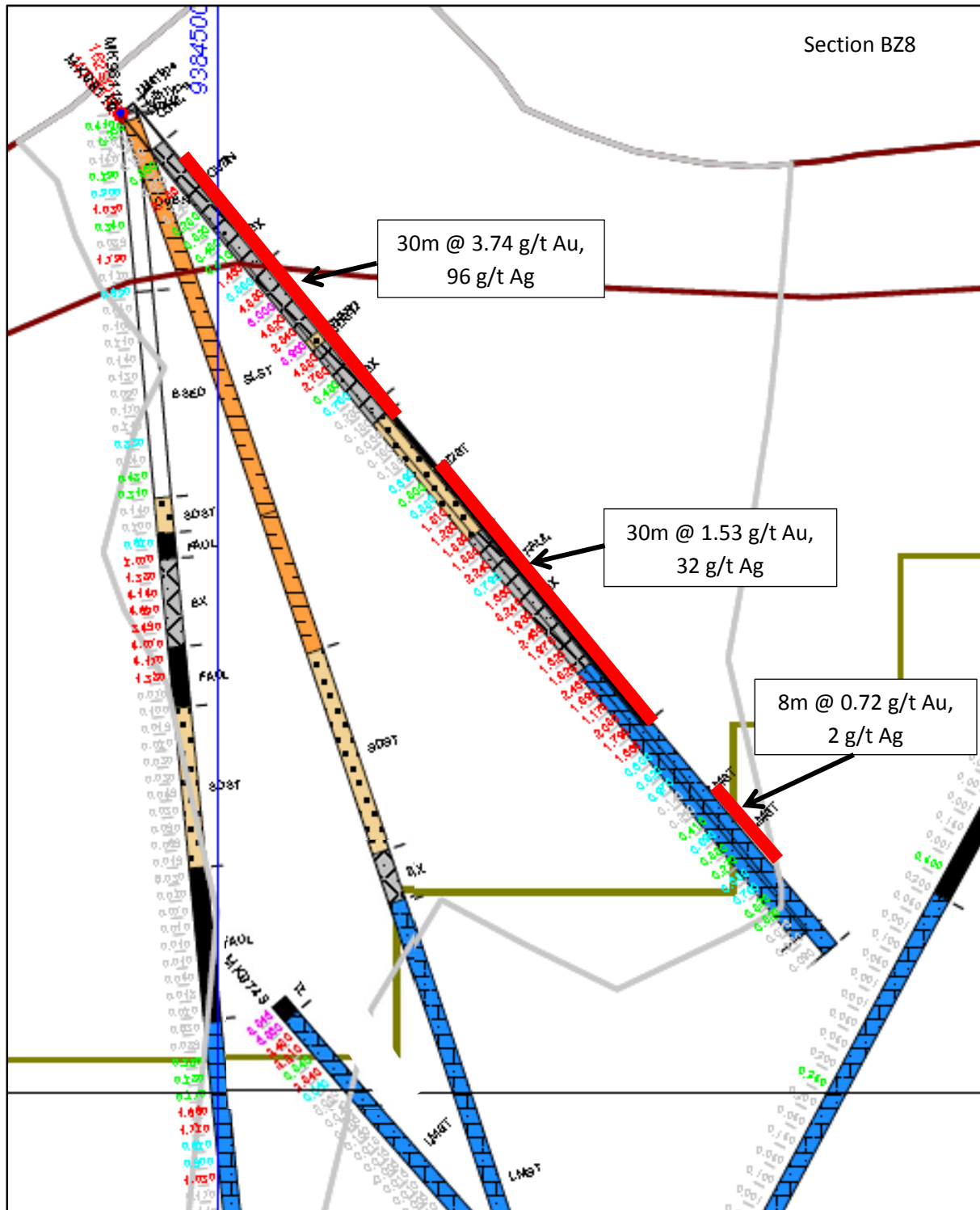
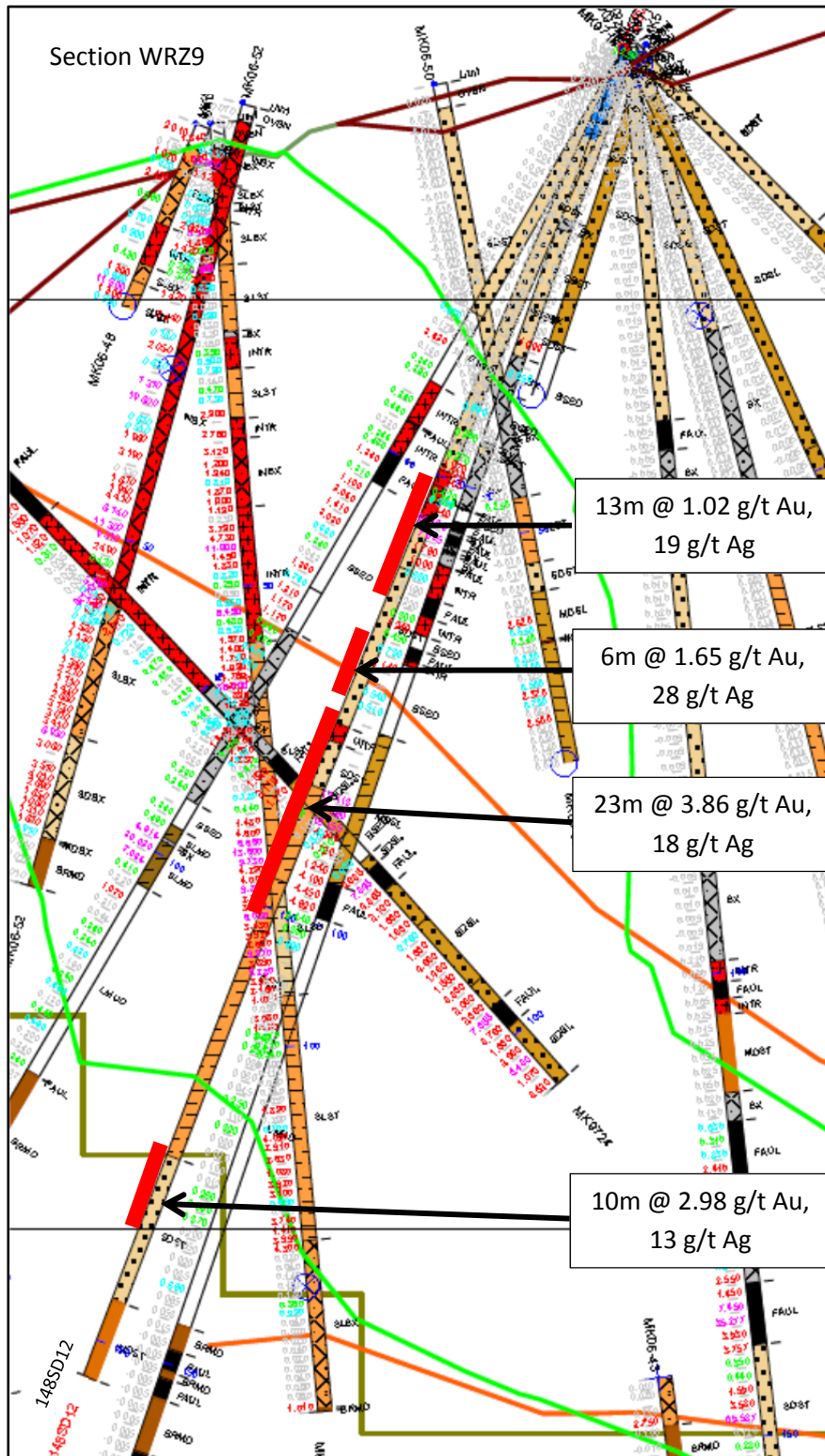


Figure 3: Cross-Section – WRZ drilling with past and new drill assay results (red bars) from hole 148SD12



INDOCHINE MINING LIMITED

Table 3: Previously reported best assay results from April-July 2012

Hole	From (m)	To (m)	Interval (m)	Au g/t	Ag g/t	Domain
122SD11	59.00	76.70	17.70	100.3	133.9	BZ
<i>incl.</i>	67.00	71.00	4.00	420.0	170.0	
123SD11	56.80	103.00	46.20	5.43	187.0	BZ
<i>incl.</i>	56.80	93.20	36.40	6.21	232.3	
<i>incl.</i>	72.70	85.30	12.60	10.10	104.0	
124SD11	Not Sampled					
125SD12	21.00	35.00	14.00	0.49	5.1	WRZ
<i>incl.</i>	77.00	104.00	27.00	3.11	4.3	
<i>incl.</i>	85.00	92.00	7.00	6.50	7.8	
<i>incl.</i>	114.00	127.00	13.00	0.46	1.6	
126SD12	26.80	50.00	23.20	2.01	33.3	WRZ
<i>incl.</i>	72.00	88.00	16.00	2.88	5.6	
<i>incl.</i>	74.00	84.00	10.00	4.40	7.7	
<i>incl.</i>	99.00	120.00	21.00	5.48	625.3	
<i>incl.</i>	145.00	150.00	5.00	0.81	5.4	
<i>incl.</i>	174.00	188.00	14.00	0.59	12.1	
127SD12	19.10	39.00	19.90	3.78	18.9	WRZ
<i>incl.</i>	19.10	36.00	16.90	3.90	19.8	
<i>incl.</i>	26.00	34.00	8.00	7.53	21.1	
<i>incl.</i>	30.00	34.00	4.00	14.49	30.2	
<i>incl.</i>	108.00	115.00	7.00	2.49	6.0	
128SD12	58.00	61.00	3.00	3.06	21.9	WRZ
<i>incl.</i>	97.00	107.00	10.00	0.50	40.5	
129SD12	16.00	63.00	47.00	2.50	20.0	WRZ
<i>incl.</i>	36.00	51.00	15.00	4.00	29.0	
<i>incl.</i>	113.00	114.00	1.00	2.86	1.8	
<i>incl.</i>	161.00	167.60	6.60	1.21	17.0	
132SD12	30.10	84.00	53.90	8.25	17.9	WRZ
<i>incl.</i>	30.10	38.00	7.90	2.30	11.0	
<i>incl.</i>	43.00	56.00	13.00	29.03	19.5	
<i>incl.</i>	62.00	63.00	1.00	10.20	78.9	
<i>incl.</i>	74.00	75.00	1.00	5.55	79.5	
<i>incl.</i>	91.00	94.00	3.00	2.93	35.9	
<i>incl.</i>	92.00	93.00	1.00	7.02	97.7	
133SD12	11.00	63.00	52.00	6.74	23.0	WRZ
<i>incl.</i>	11.00	46.00	35.00	8.15	18.7	
<i>incl.</i>	50.00	52.00	2.00	14.35	89.7	
<i>incl.</i>	61.00	62.00	1.00	13.50	100.0	

Table 3: Previously reported best assay results from August - October 2012

Hole	From (m)	To (m)	Interval (m)	Au g/t	Ag g/t	Domain	
137SD12	7	17	10.00	6.00	2.25	WRZ	
	25	36	11.00	6.35	14.28		
	112	114	2.00	0.91	10.95		
138SD12	35	67	32.00	4.10	5.96	WRZ	
	<i>incl</i>	35	39	4.00	17.16		4.33
141SD12	2.1	6	3.90	0.93	44.95	WRZ	
	14	17	3.00	1.44	15.17		
142SD12	20	62	42.00	2.02	37.9	WRZ	
	<i>incl</i>	45	60	15.00	3.04		57.23
143SD12	7	42	35.00	2.52	90.26	BZ	
	52	55	3.00	0.67	32.13		
	62	67	5.00	0.65	2.14		
	74	82	8.00	1.12	34.25		
144SD12	23	24	1.00	2.94	11	WRZ	
145SD12	6.1	24	17.90	0.74	10.11	WRZ	
	30	55	25.00	2.70	21.27		
	<i>incl</i>	30	46	16.00	3.63		31.44
	64	93	29.00	1.20	15.03		
146SD12	9	30	21	1.8	64	BZ	
	37	49	12	8	30		
	56	64	8	0.9	17		
	78	116	38	20.8	57		
	<i>incl.</i>	94	99	5	120.1		93
	132	136	4	1.4	19		
	159	162	3	1.9	5		

Competent Person Statement

Anthony W. Burgess, a qualified consultant for Indochine Mining Ltd, is a member of the Australasian Institute of Mining and Metallurgy and has sufficient experience relevant to the style of mineralisation and type of deposit under consideration and to the activity undertaken, being reported herein as Exploration Results, to qualify as a Competent Person as defined in the 2004 Edition of the Australasian Code for Reporting of Exploration Results, Mineral Resources and Ore Reserves (The JORC Code, 2004 Edition). Anthony W. Burgess has consented to the public reporting of these statements and results and the form and context in which they appear.