



INDOCHINE MINING LIMITED

ACN 141 677 385

16 October 2012

Company Announcements Office
Australian Securities Exchange

8 Pages

Drilling Update – High Grade Gold Results Continue on Indochine’s Mt Kare Gold/Silver Project, PNG

High grade gold results continue to be returned in assays from the drilling at Indochine Mining’s (ASX:IDC) gold/silver project at Mt Kare, in Papua New Guinea (PNG). Recent best results returned include:

Drillhole 137SD12:

10 metres at 6 grams/tonne gold, 2.3 g/t silver from 7 metres depth downhole and
11 metres at 6.4 grams/tonne gold, 14 g/t silver from 25 to 36 metres downhole.

Drillhole 138SD12:

32 metres at 4.1 grams/tonne gold, 6.0 g/t silver from 35 to 67 metres downhole, which
includes **4 metres at 17.2 grams/tonne gold, 4.3 g/t silver** from 35 to 39 metres downhole.

Drillhole 142SD12:

42 metres at 2.0 grams/tonne gold, 38 g/t silver from 20 to 62 metres downhole, which
includes **15 metres at 3.0 grams/tonne gold, 57 g/t silver** from 45 to 60 metres downhole.

Drillhole 143SD12:

35 metres at 2.5 grams/tonne gold, 90 g/t silver from 7 to 42 metres downhole

Drillhole 144SD12:

25 metres at 2.7 grams/tonne gold, 21 g/t silver from 30 to 55 metres downhole, which
includes **16 metres at 3.6 grams/tonne gold, 31 g/t silver** from 30 to 46 metres downhole.

Results from a further 36 drillholes are pending and are expected to be released over the coming months. The JORC Resource currently stands at 28Mt @ 1.9g/t Au for 1.8Moz gold and 20Moz silver, with a higher grade zone of 700,000oz gold at 3.7 g/t gold.

Ian Ross, Chairman IDC confirms that the Company will be focusing on a new drilling programme to prove up Mr Tony Burgess’s 3 high grade zones – as indicated in the announcement of 3 October 2012, excerpts from which are included below :

“The consultant, Tony Burgess, was the Senior Resource Geologist and Competent Person for Resource Definition at the nearby Porgera mine during a period of multi-million ounce

INDOCHINE MINING LIMITED

AUSTRALIA: Suite 1, Level 3, 275 George St, Sydney, NSW 2000, T: +61 2 8246 7007, Fax: +61 2 8246 7005

discoveries by focusing on high grade zones. Mr Burgess conducted a recent 3 week data review of historical and recent drilling at Mt Kare, including a detailed site visit, designed to focus the future drilling programme.

He has identified three high grade zones with potential extensions at depth and along strike, in a report just tabled with the Board. Mr Burgess believes the high grade zones are "bonanza gold occurrences" with "an identical signature to the 'bonanza' quartz roscoelite zones at Porgera" which includes Zone VII (5.1Moz at 27g/t Au in 5.8Mt, historically).

A considerably improved geological model is being prepared which will drive the drill targeting, defined by the onsite team and Mr Burgess, including new areas not adjacent to current mineralisation. The confidence in the resource potential is driven not solely by the presence and extent of the quartz roscoelite mineralisation, but also by the similar style and age of intrusive rocks, similar host rocks, and a similar structural setting."

Stephen Promnitz, Chief Executive Officer, **Indochine Mining Limited**

For further details:

Company:

Indochine Mining - Stephen Promnitz, CEO
info@indochinemining.com +61 2 8246 7007

Media:

FCR - Rob Williams
 +61 2 8264 1003 / +61 468 999 369

Table 1: Assays from reported Drill Holes

Hole	From (m)	To (m)	Interval (m)	Au g/t	Ag g/t	Domain
137SD12	7	17	10.00	6.00	2.3	WRZ
	25	36	11.00	6.35	14.3	
138SD12	35	67	32.00	4.10	6.0	WRZ
	<i>incl</i>	35	39	4.00	17.16	
141SD12	2.1	6	3.90	0.93	45.0	WRZ
	14	17	3.00	1.44	15.2	
142SD12	20	62	42.00	2.02	37.9	WRZ
	<i>incl</i>	45	60	15.00	3.04	
143SD12	7	42	35.00	2.52	90.3	BZ
	74	82	8.00	1.12	34.3	
144SD12	23	24	1.00	2.94	11.0	WRZ
145SD12	6.1	13	6.90	1.03	8.9	WRZ
	30	55	25.00	2.70	21.3	
	<i>incl</i>	30	46	16.00	3.63	
	64	93	29.00	1.20	15.0	

Intercepts are downhole and not true width. Assays reported as received from the laboratory, no top cuts applied.

Table 2: Location of reported drillholes

		Mt Kare Local Grid					
Hole	Zone	Easting	Northing	RL	Azimuth (°)	Dip (°)	Depth (m)
137SD12	WRZ	18811.4	84019.2	2850.7	0	-90	133
138SD12	WRZ	18975.0	84173.0	2883.5	315	-55	110.4
141SD12	WRZ	18765.8	84100.7	2819.4	0	-90	42.1
142SD12	WRZ	18787.1	84197.2	2817.1	135	-50	120.5
143SD12	BZ	19620.1	84359.7	3007.9	135	-70	90.4
144SD12	WRZ	18975.0	84173.2	2883.5	135	-50	51.7
145SD12	WRZ	18810.1	84220.2	2821.1	135	-70	130.3

Figure1: Plan of the Mt Kare Resource with locations of drillholes and resource model zones

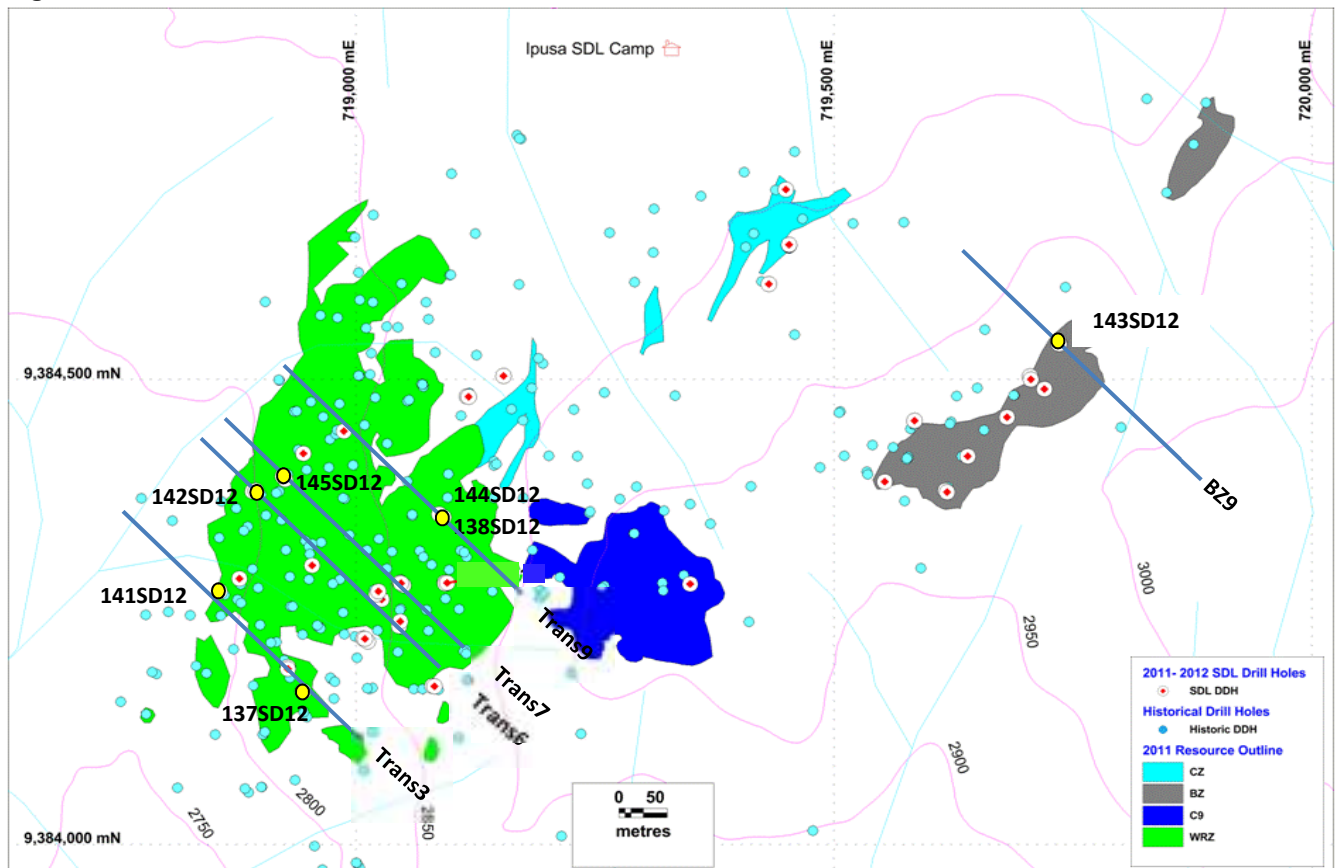


Figure 2: Cross-Section – WRZ resource block with past and new drill assay results (red bars) from 137SD12 and 141SD12

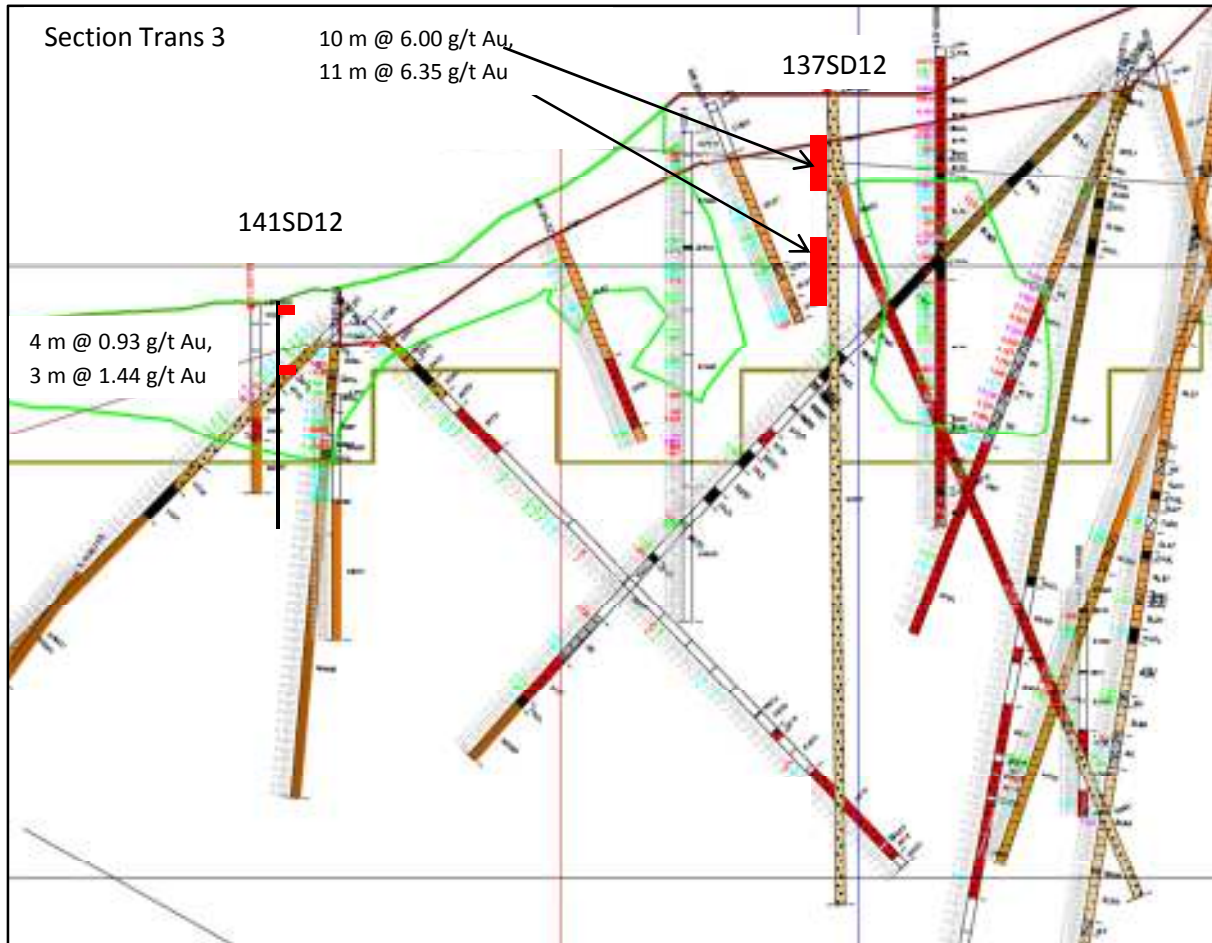


Figure 3: Cross-Section – WRZ resource block with past and new drill assay results (red bars) from 142SD12

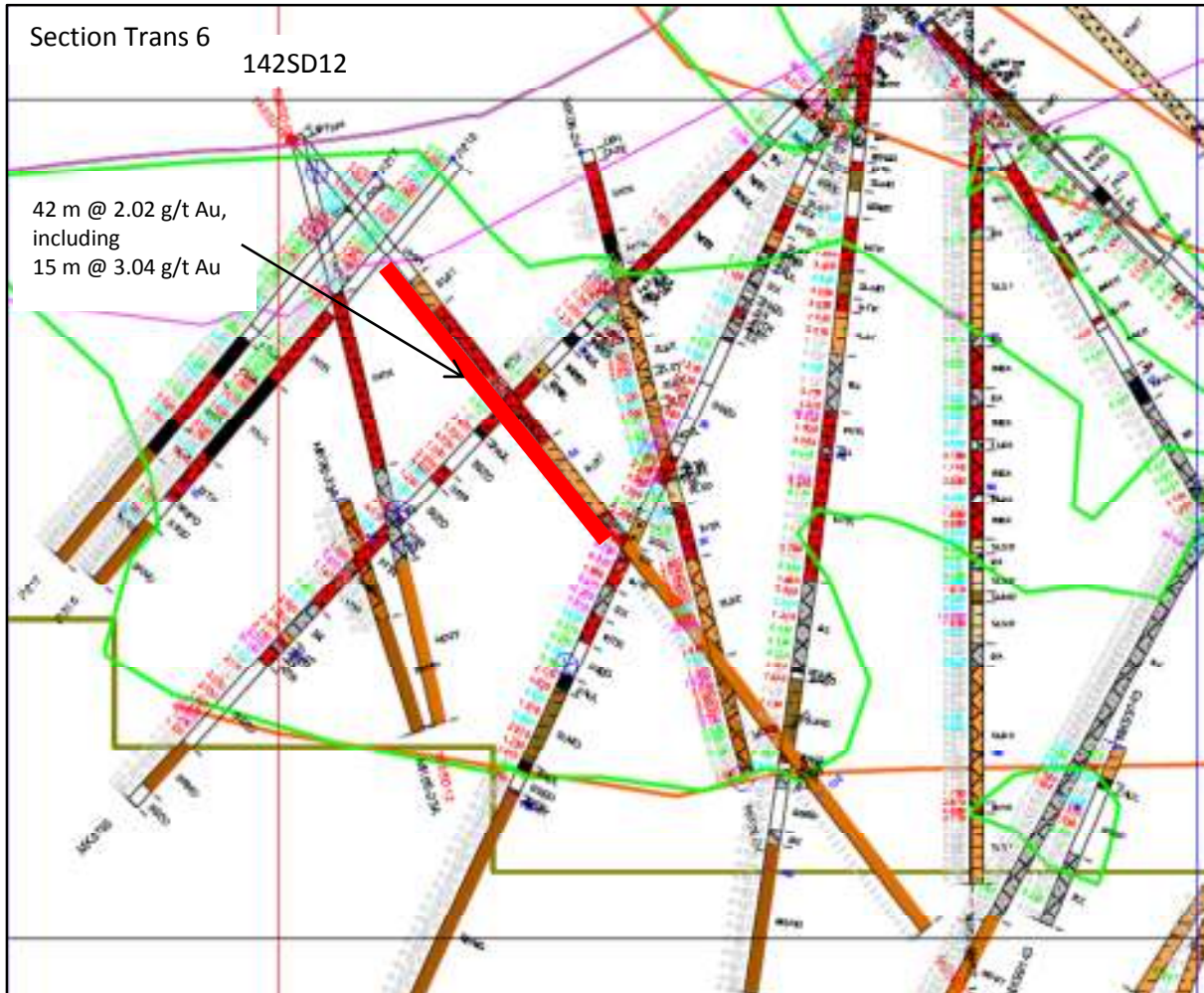


Figure 4: Cross-Section – WRZ resource block with past and new drill assay results (red bars) from 145SD12

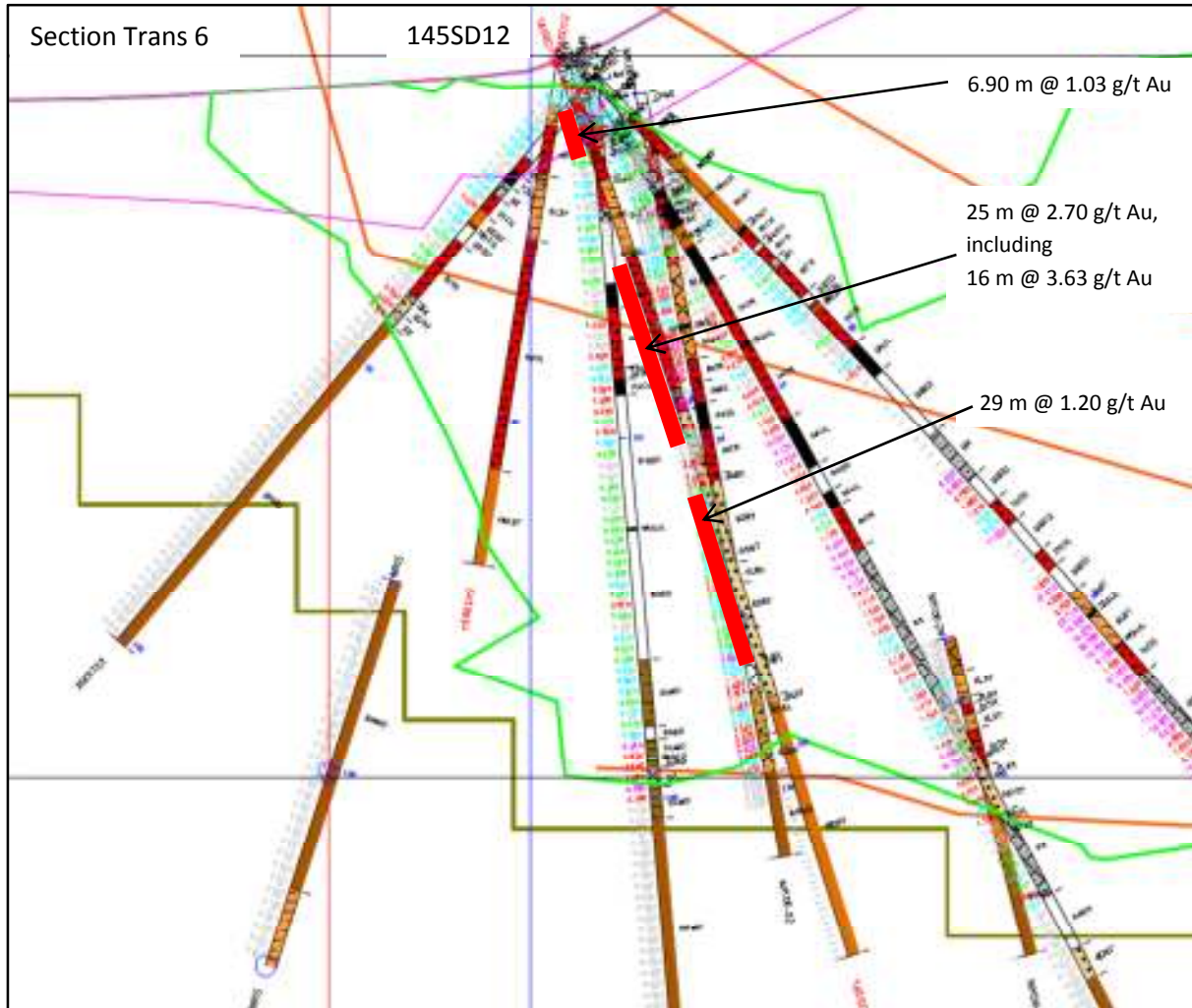
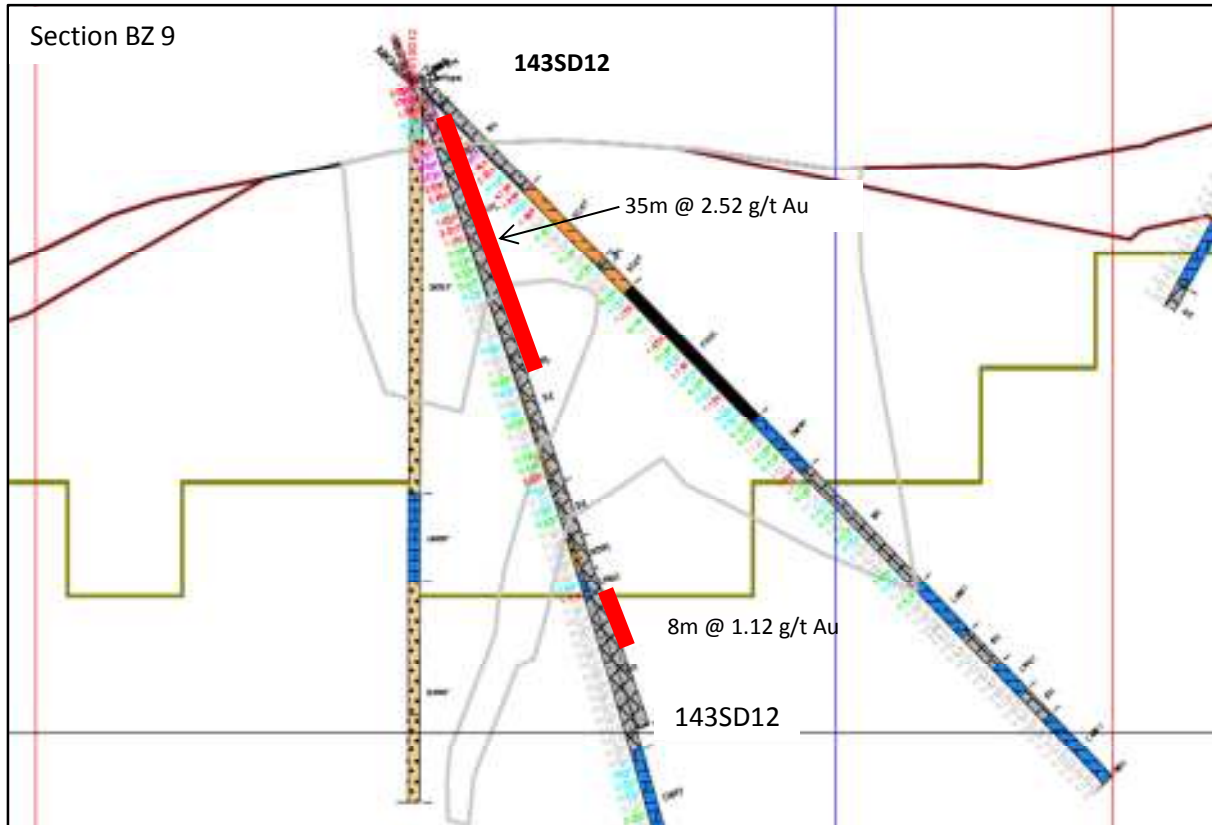


Figure 5: Cross-Section – WRZ resource block with past and new drill assay results (red bars) from 144SD12 and 138SD12



Figure 6: Cross-Section – BZ resource block with past and new drill assay results (red bars) from 143SD12



Competent Person Statement

Anthony W. Burgess, a qualified consultant for Indochine Mining Ltd, is a member of the Australasian Institute of Mining and Metallurgy and has sufficient experience relevant to the style of mineralisation and type of deposit under consideration and to the activity undertaken, being reported herein as Exploration Results, to qualify as a Competent Person as defined in the 2004 Edition of the Australasian Code for Reporting of Exploration Results, Mineral Resources and Ore Reserves (The JORC Code, 2004 Edition). Anthony W. Burgess has consented to the public reporting of these statements and results and the form and context in which they appear.